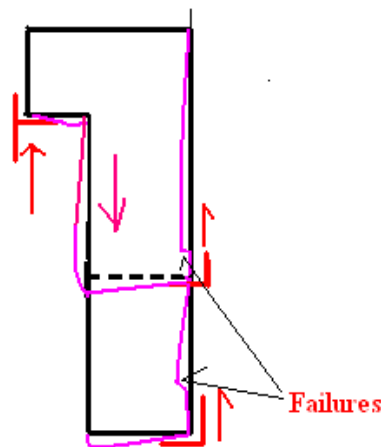
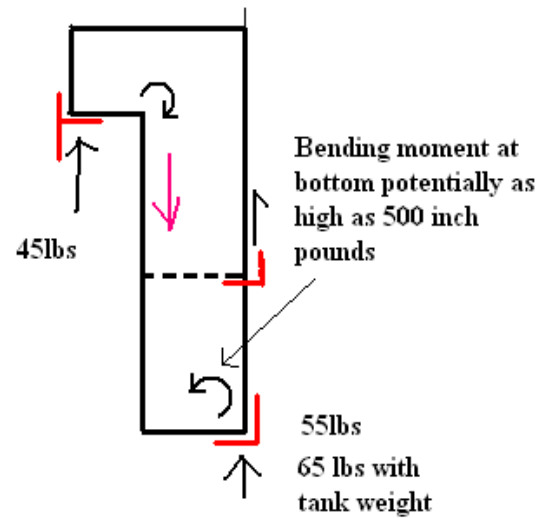
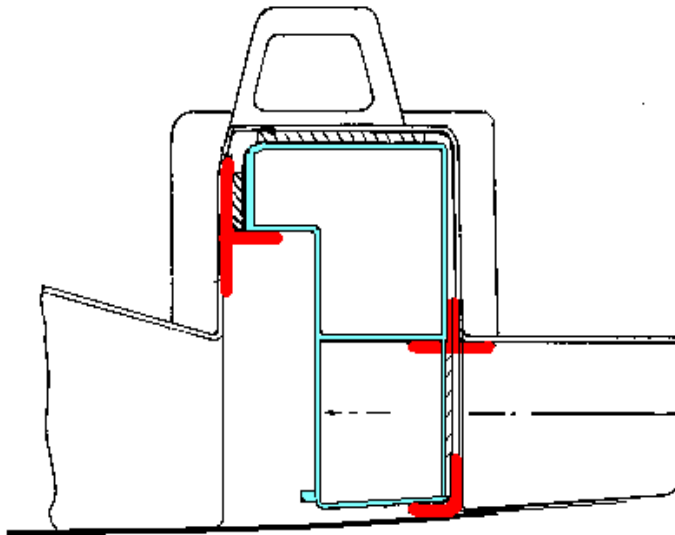
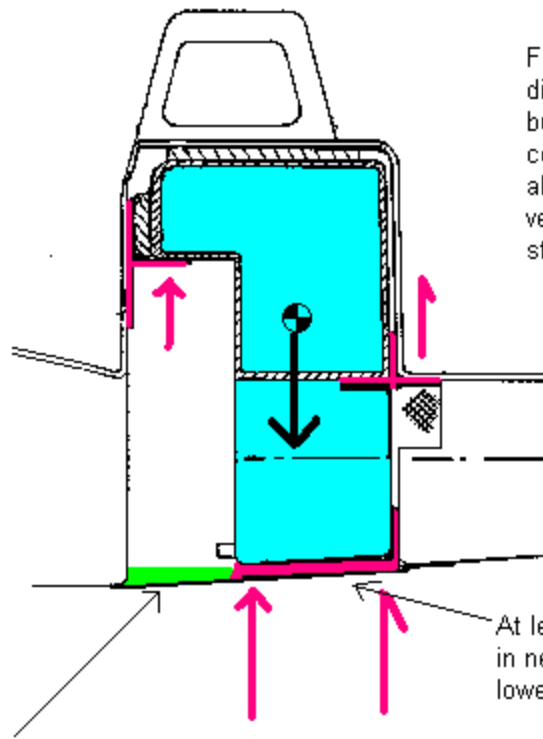


Quick and dirty stress analysis



Saddle support and bottom support only on rear of tank creates a stress riser when the weight of the tank causes the PPL to sag under the load. Epoxy/glass secures the tank so firmly that the bulge or bending sets up a stress riser in the tank wall and a crack. Autopsy of tank left unfilled where it could get brittle then refilled indicates failures at the points noted.



Fiberglass supports are not glued directly to tank, only to the bulkhead. Use cork padding and cover tank with release tape to allow the tank supports give vertical support without bending stress.

At least support the tank which is in near proximity contact with the lower fuselage skin

Possible extension to add a longeron from front face to rear of tank.